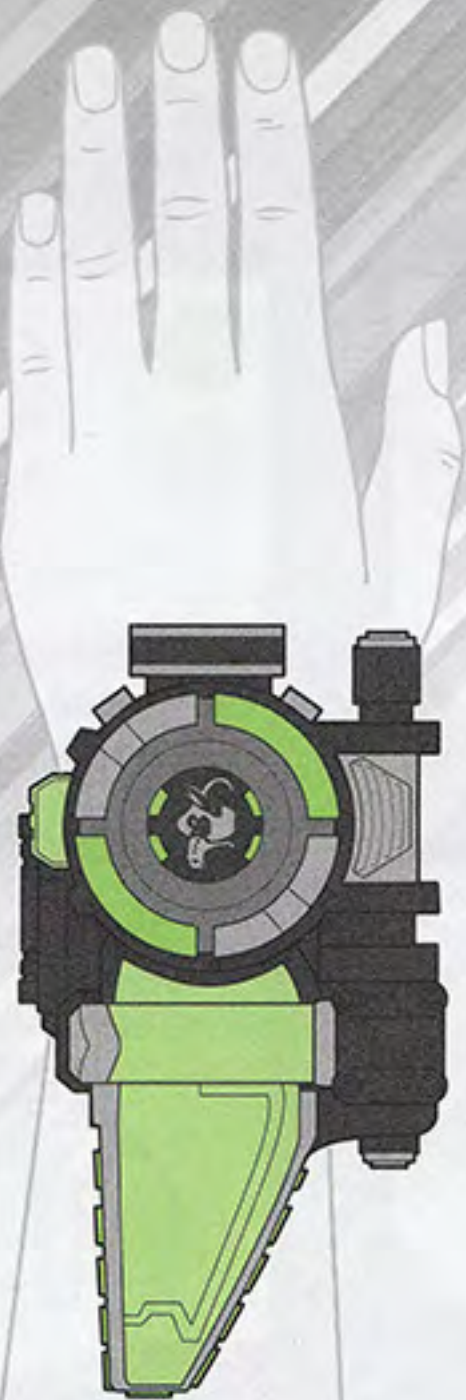


AGES 5+

**BEAST**  
MORPHERS



TO UNLOCK OTHER CHARACTER SOUNDS AND PHRASES, LOOK FOR ADDITIONAL MORPH-X KEYS SOLD WITH POWER RANGERS FIGURES.



Red  
Ranger

Each sold separately. Subject to availability.

**BEAST-X MORPHER**

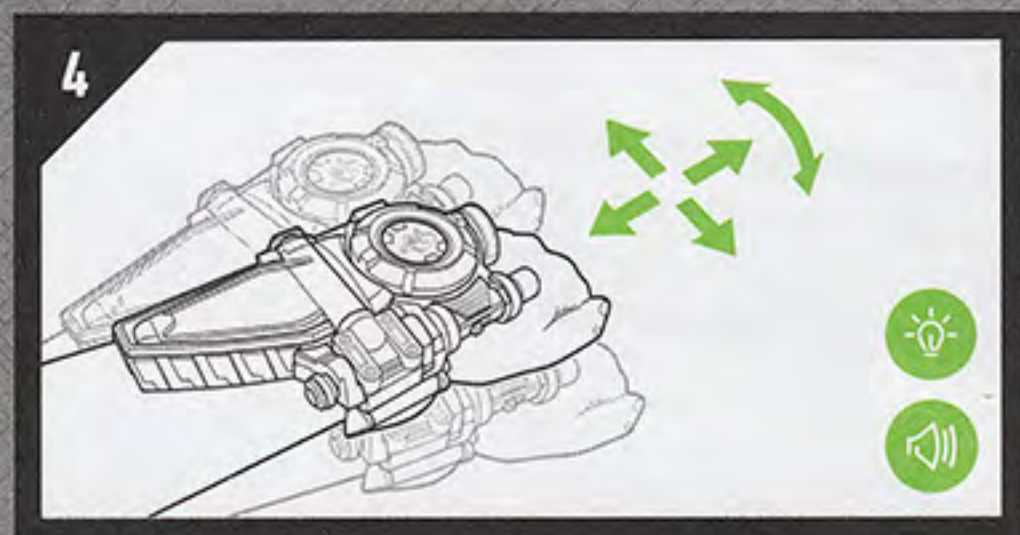
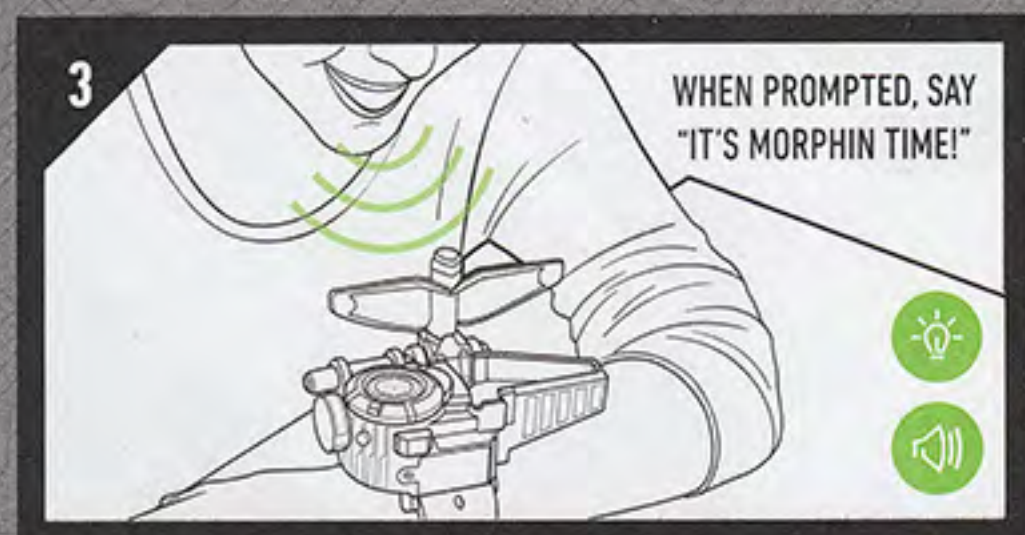
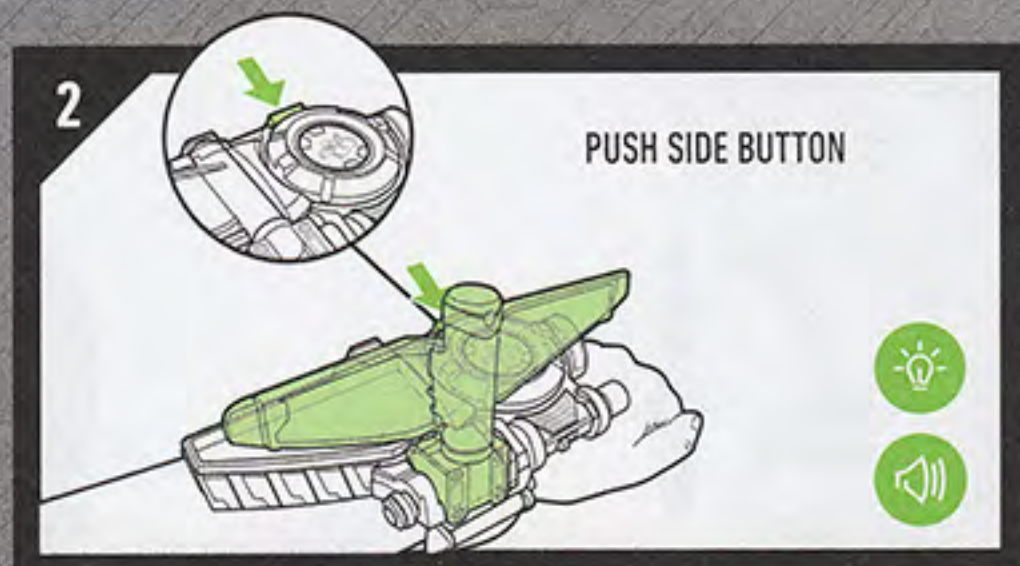
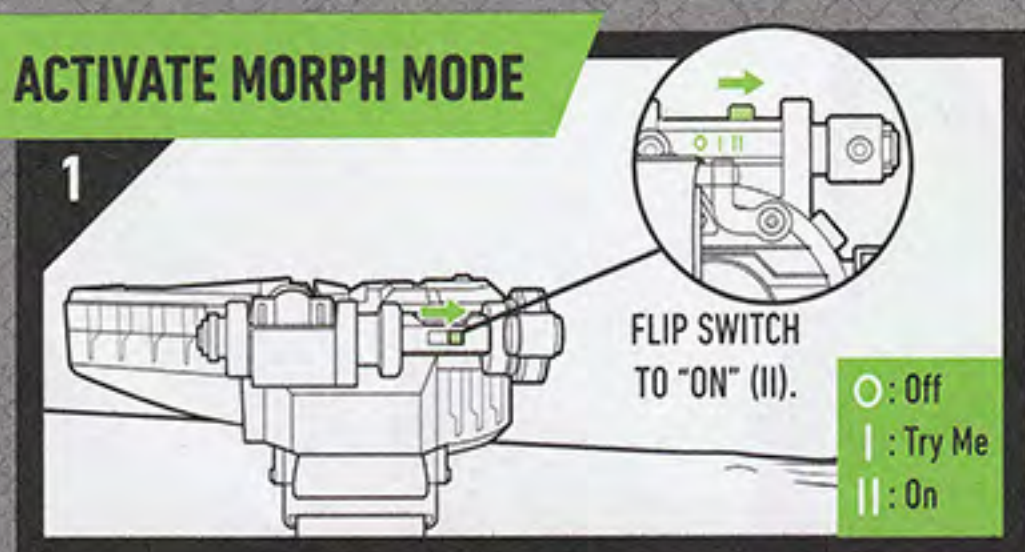
SABAN'S  
**POWER RANGERS**



## ADJUST STRAP TO FIT



## ACTIVATE MORPH MODE



### TO REPLACE BATTERIES

#### 2x 1.5V AA ALKALINE BATTERIES REQUIRED

Replace demo batteries with alkaline batteries. Use a Phillips/cross head screwdriver (not included).

## IMPORTANT: BATTERY INFORMATION

### ⚠ CAUTION:

#### 1. TO AVOID BATTERY LEAKAGE

- Always follow the instructions carefully. Use only batteries specified and be sure to insert them correctly by matching the + and - polarity markings.
- Do not mix old batteries and new batteries or standard (carbon-zinc) with alkaline batteries.
- Remove exhausted or dead batteries from the product.
- Remove batteries if product is not to be played with for a long time.
- Do not short-circuit the supply terminals.
- RECHARGEABLE BATTERIES:** Do not mix these with any other types of batteries. Always remove from the product before recharging. Recharge batteries under adult supervision. **DO NOT RECHARGE OTHER TYPES OF BATTERIES.**

- Should this product cause, or be affected by, local electrical interference, move it away from other electrical equipment. Reset (switching off and back on again or removing and re-inserting batteries) if necessary.

#### FCC STATEMENT

This device complies with Part 15 of the FCC Rules. Operation is subject to the following two conditions: (1) This device may not cause harmful interference, and (2) this device must accept any interference received, including interference that may cause undesired operation.

NOTE: This equipment has been tested and found to comply with the limits for a Class B digital device, pursuant to Part 15 of the FCC Rules. These limits are designed to provide reasonable protection against harmful interference in a residential installation. This equipment generates, uses and can radiate radio frequency energy, and, if not installed and used in accordance with the instructions, may cause harmful interference to radio communications. However, there is no guarantee that interference will not occur in a particular installation. If this equipment does cause harmful interference to radio or television reception, which can be determined by turning the

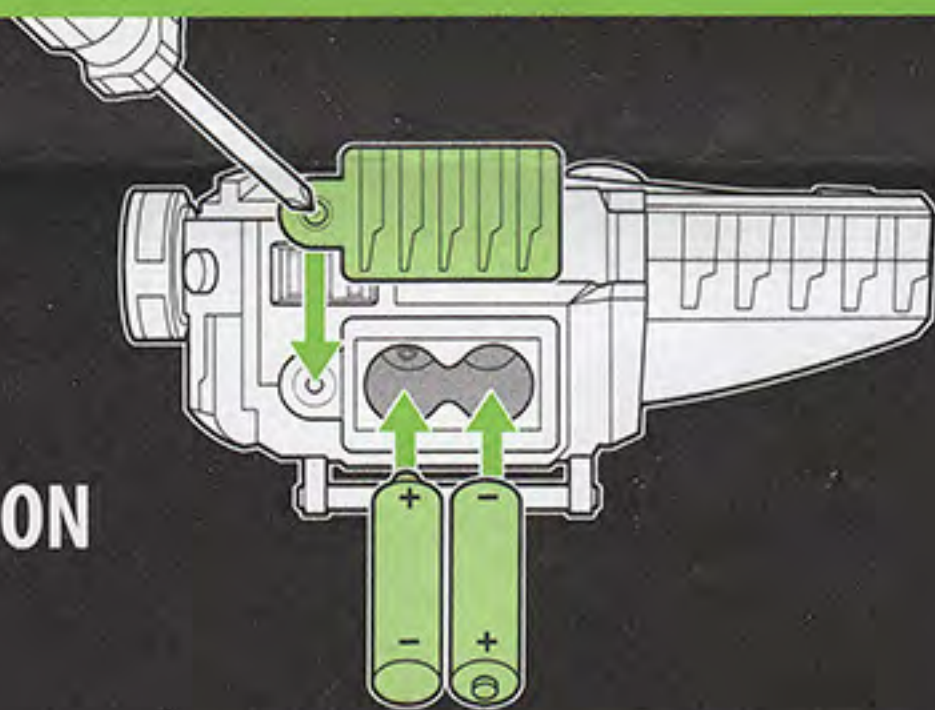
equipment off and on, the user is encouraged to try to correct the interference by one or more of the following measures:

- Reorient or relocate the receiving antenna.
- Increase the separation between the equipment and the receiver.
- Consult the dealer or an experienced radio/TV technician for help.

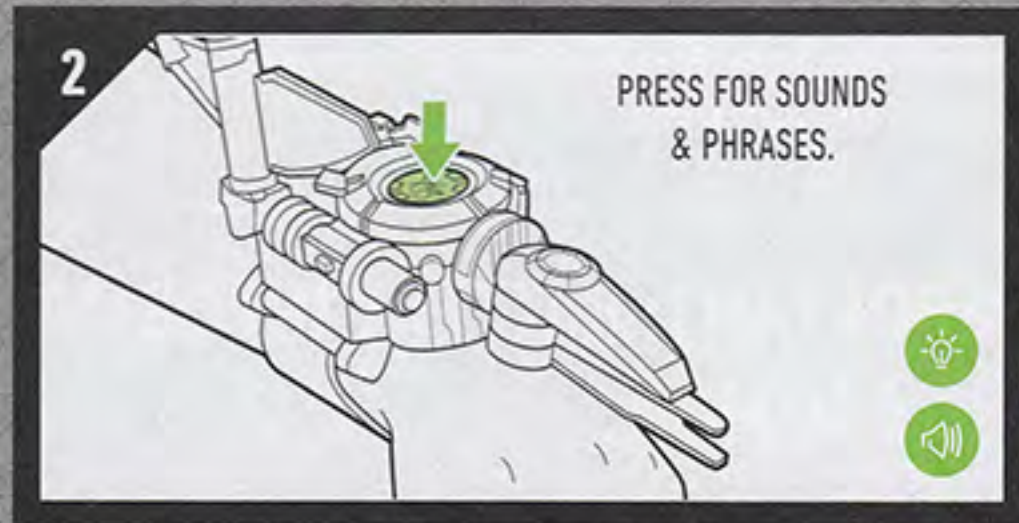
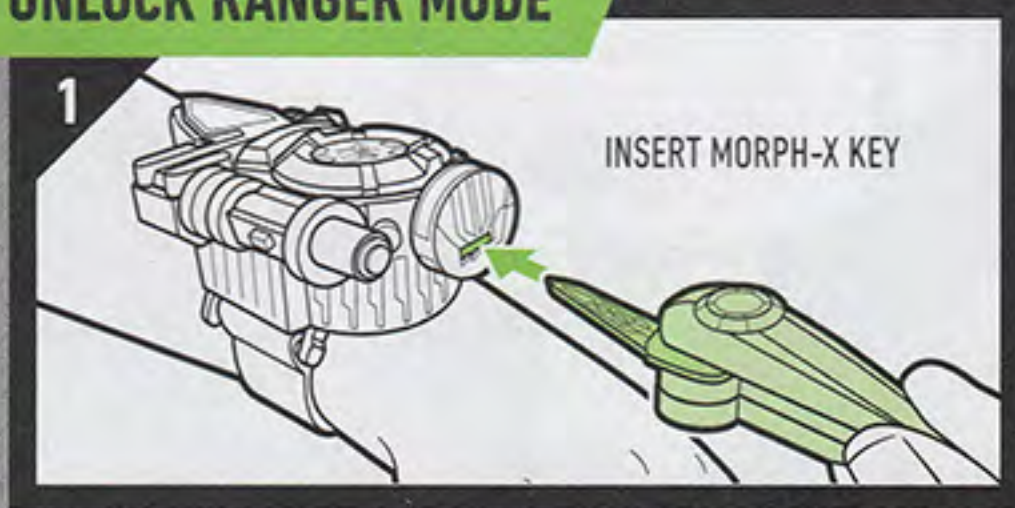
#### CAUTION:

Changes or modifications to this unit not expressly approved by the party responsible for compliance could void the user's authority to operate the equipment.

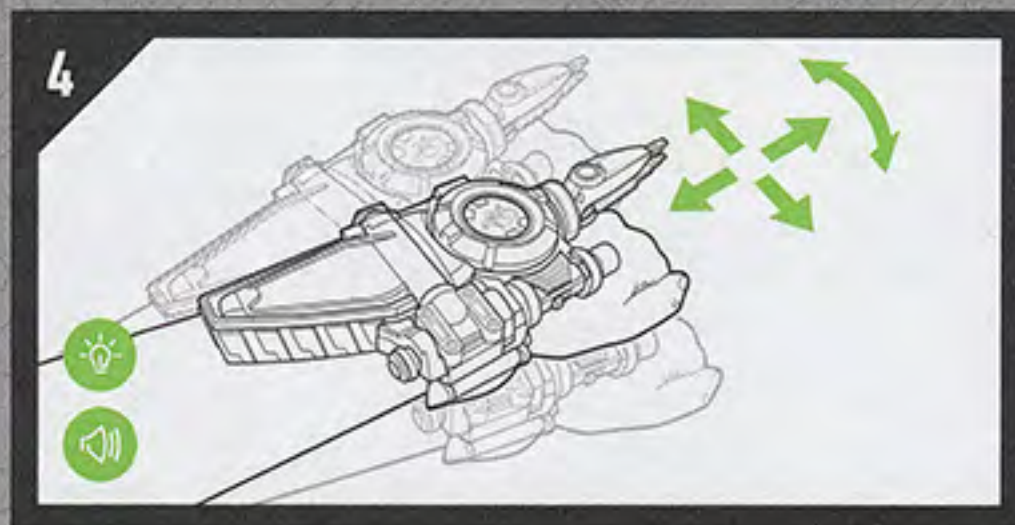
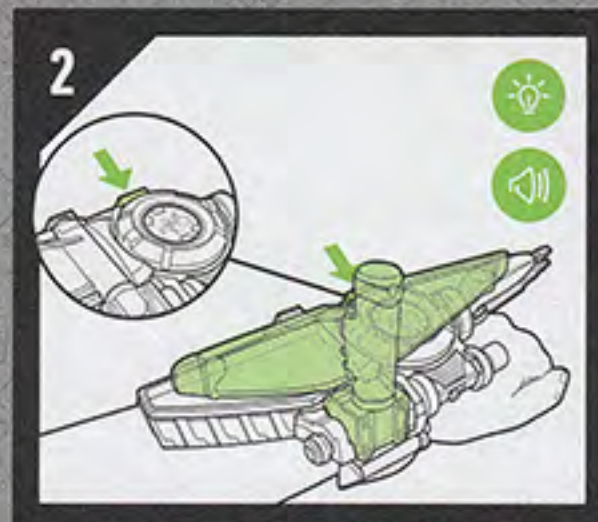
CAN ICES-3 (B)/NMB-3(B)



## UNLOCK RANGER MODE



## ACTIVATE BEAST-X MODE



### TIPS

- Beast-X Morpher goes to sleep after 30 seconds of non-use.
- If Morpher does not react, toggle on/off switch.
- Insert Morph-X key all the way in to Morpher. Only one Morph-X key can be inserted at a time.

PowerRangers.com

Website not available in all languages.

Product and colors may vary. Retain this information for future reference. Le produit et les couleurs peuvent varier.

Conservez cette information pour référence ultérieure. TM & © 2018 SCG Power Rangers LLC. and HASBRO, Pawtucket, RI 02861-1059

USA. All Rights Reserved. Tous droits réservés. TM & ® denote U.S. Trademarks.

HASBRO CANADA, LONGUEUIL, QC, CANADA J4G 1G2. US/CANADA TEL. 1-800-255-5516.

E5902

PN00033437

